

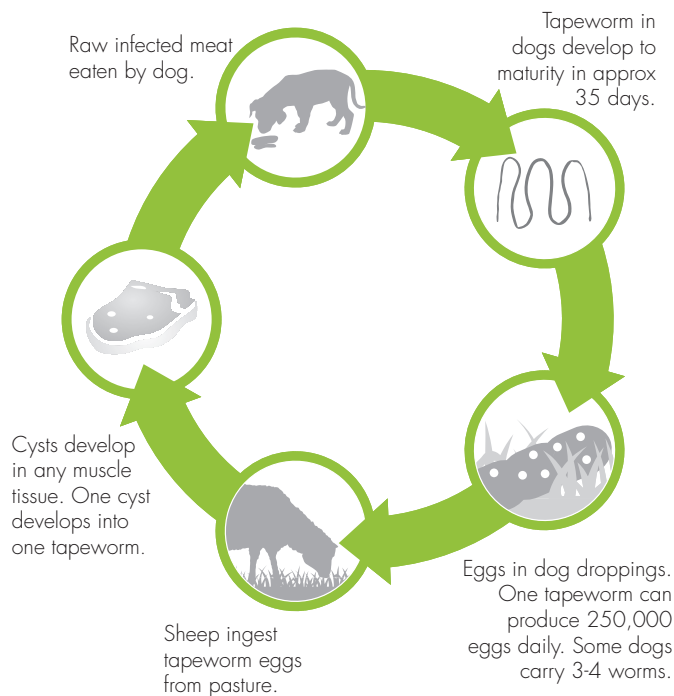
WHY SHOULD FARMERS CARE ABOUT SHEEP MEASLES

Sheep measles (Cysticercus ovis) are small cysts found in the muscle tissue of infected sheep (and goats).

Although sheep measles poses no risk to human health, it does cause blemishes in sheep meat which are undesirable for consumers.

Cysts are found throughout the meat, but only a small proportion are on, or near the surface, as a result many of the cysts are not detected during processing.

Infected dogs on farms pose a serious risk, leading to downgraded or condemned stock and significant financial loss long-term.



We are one of the few countries globally to eradicate True Hydatids.

We are on the right path to eradicate Sheep Measles too, but it will take a joint effort.

Are you up for the challenge?
Be part of this "good news" story.

And remember it's.....

**YOUR LAND
YOUR LIVELIHOOD
YOUR RULES**



www.sheepmeasles.co.nz

0800 222 011

OVIS
MANAGEMENT
PROMOTE PROTECT PARTICIPATE



Find us on Facebook
[Facebook.com/sheepmeasles/](https://www.facebook.com/sheepmeasles/)

SHEEP MEASLES INFORMATION FOR FARMERS



Sheep Measles is prevented by dosing dogs.

It's that simple.
AND IT'S CHEAP!

OVIS
MANAGEMENT
PROMOTE PROTECT PARTICIPATE

ON FARM CONTROL OF SHEEP MEASLES

CRITICAL

Dog Treatment

Dogs on an appropriate dosing programme, Ovis Management recommend monthly dosing. New dogs dosed 48 hours prior to arrival.

- **Reason:** Treatment of dogs with a cestocidal drug will remove any tapeworms present.
- **Check:** Note or account from vet/animal health adviser outlining treatment programme. Record of treatment.

Home Killing

If home killing, killing and cutting up of sheep or goat meat to be carried out in a secure, dog proof area.

- **Reason:** Dogs become infected via access to raw or untreated sheep or goat meat. These facilities should not be accessible to dogs at any time.
- **Check:** Killing facility has self-closing door, no external uncovered drains, dog proof fencing.

Offal disposal

Offal and dead stock should be disposed of in areas/ pits fenced or covered to make them dog proof.

- **Reason:** Unfenced or uncovered disposal areas allow wandering dogs access to remains of animals.
- **Check:** Covered offal disposal containers. Dog proof fencing or dog proof lids on offal pits.

Treatment of Meat for Dog Food

If freezing sheep or goat meat for dog food, meat must be frozen at -10°C for at least 10 days.

- **Reason:** Freezing destroys any cysts present. 10 days allows for deep bone freezing.
- **Check:** Check temp -10°C or colder, freezer seals ok, if reliant on meat does an ID system exist allowing meat time of entry to freezer to be viewed.

Foreign Dogs

Awareness of the need to deter foreign dogs.

- **Reason:** Foreign dogs, especially from other sheep farmers, present risks of pasture contamination.
- **Check:** Presence of "restricted dog" signs; knowledge of the need to deter visiting dogs.

RECOMMENDED

Removal of dead stock

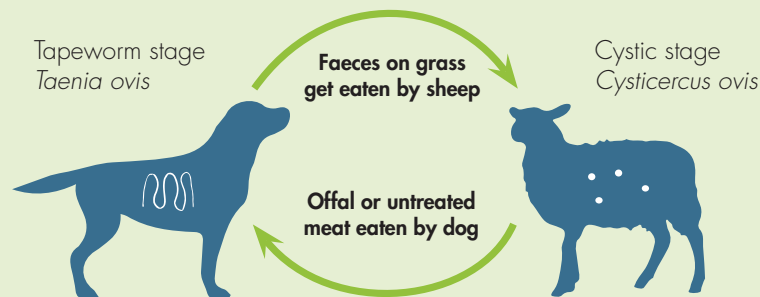
Dead stock, where possible, removed from paddocks

- **Reason:** Dead stock draw wandering dogs onto the property increasing risk of pasture contamination.
- **Check:** No dead stock visible during farm inspection.

Dog control

Effective facilities for on-farm dog control exist

- **Reason:** Control of dogs when not working reduces opportunities for scavenging.
- **Check:** Suitable kennels, availability of snap hooks, short chains on dogs.



DON'T FORGET...

NEVER FEED RAW OR UNTREATED HOUSEHOLD SHEEP OR GOAT MEAT SCRAPS TO DOGS. THIS ALSO INCLUDES OFFAL.

- If you feed offal and meat scraps to cats make sure dogs cannot gain access.
- Always have alternative feed on hand in case of a shortage of treated sheep meat.
- The sheep measles tapeworm takes 35 days to mature so if dogs are on or near sheep pasture regularly they should be dosed monthly with tablets from a Veterinarian or rural supply stores.
- Worming tablets with the active ingredient Praziquantel are effective against Sheep Measles and are only a couple of dollars. We recommend either Droncit or Wormicide.
- Check out the dose rate on our website www.sheepmeasles.co.nz/dose-rate or speak to your Vet.
- **If you are not dosing monthly, dogs must be dosed at least 48 hours before going on or near farm land.**
- **All dogs on your property need to be dosed monthly. So this means pets and any pig dogs, or any staff's dogs too.**

